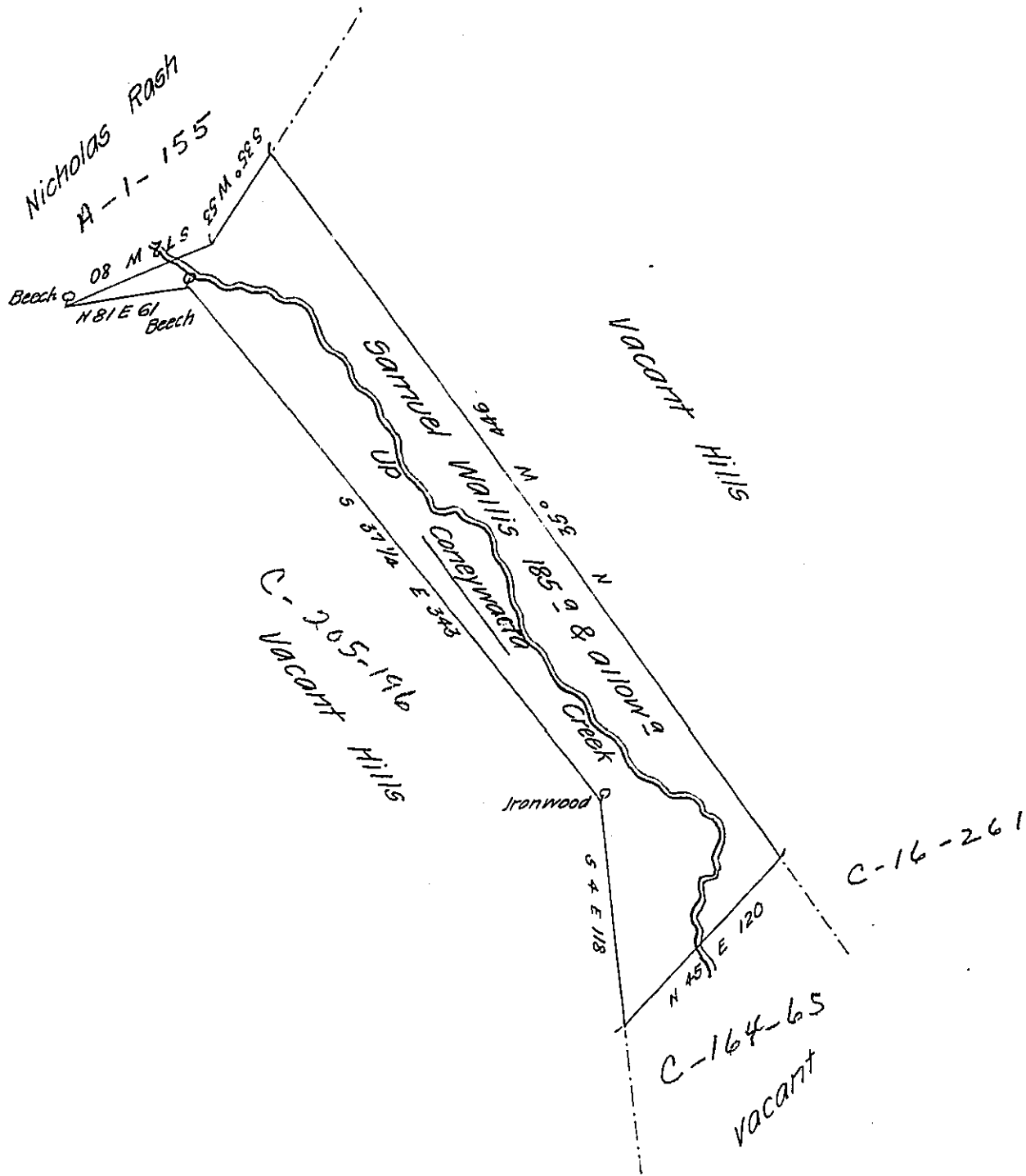


FORM NO 1.



A draught of a tract of land called—situate on Coneywacta Creek  
 in the County of Luzerne adjoining land of Nicholas Rash, survey'd the 20<sup>th</sup> day  
 of June 1788 for Samuel Wallis in pursuance of his warrant bearing date the  
 8<sup>th</sup> day of January 1788 containing one hundred and eighty five acres and the  
 Allowance of Six P<sup>er</sup> Cent for roads &c by

W<sup>m</sup> Gray D.S.

To John Lukens Esq<sup>r</sup>

Surveyor General

IN TESTIMONY that the above is a copy of the original remaining on file in  
 the Department of Internal Affairs of Pennsylvania, made  
 conformably to an Act of Assembly approved the 16th day of  
 February, 1833, I have hereunto set my Hand and caused  
 the Seal of said Department to be affixed at Harrisburg,  
 this seventeenth day of September 1907

*Henry Hoveck*  
 Secretary of Internal Affairs.